



Room Number	Room Name	Area (m²)	Notes
1.001	1. BEDROOM APARTMENT	45.00	
1.002	1. LIVING ROOM / ENTRANCE CORRIDOR	15.00	
1.003	1. KITCHEN	8.00	
1.004	1. BATHROOM	5.00	
1.005	1. BALCONY	3.00	
1.006	1. TERRACE	10.00	
1.007	1. STAIRS	2.00	
1.008	1. HALLWAY	1.00	
1.009	1. TOILET	1.00	
1.010	1. CLOSET	1.00	
1.011	1. STORAGE	1.00	
1.012	1. GARAGE	15.00	
1.013	1. OFFICE	10.00	
1.014	1. CONFERENCE ROOM	15.00	
1.015	1. RECEPTION	10.00	
1.016	1. WAITING AREA	10.00	
1.017	1. RESTROOM	5.00	
1.018	1. STORAGE ROOM	5.00	
1.019	1. MECHANICAL ROOM	5.00	
1.020	1. ELECTRICAL ROOM	5.00	
1.021	1. TELEPHONE ROOM	5.00	
1.022	1. SECURITY ROOM	5.00	
1.023	1. JANITORY	5.00	
1.024	1. STORAGE	5.00	
1.025	1. STORAGE	5.00	
1.026	1. STORAGE	5.00	
1.027	1. STORAGE	5.00	
1.028	1. STORAGE	5.00	
1.029	1. STORAGE	5.00	
1.030	1. STORAGE	5.00	
1.031	1. STORAGE	5.00	
1.032	1. STORAGE	5.00	
1.033	1. STORAGE	5.00	
1.034	1. STORAGE	5.00	
1.035	1. STORAGE	5.00	
1.036	1. STORAGE	5.00	
1.037	1. STORAGE	5.00	
1.038	1. STORAGE	5.00	
1.039	1. STORAGE	5.00	
1.040	1. STORAGE	5.00	
1.041	1. STORAGE	5.00	
1.042	1. STORAGE	5.00	
1.043	1. STORAGE	5.00	
1.044	1. STORAGE	5.00	
1.045	1. STORAGE	5.00	
1.046	1. STORAGE	5.00	
1.047	1. STORAGE	5.00	
1.048	1. STORAGE	5.00	
1.049	1. STORAGE	5.00	
1.050	1. STORAGE	5.00	
1.051	1. STORAGE	5.00	
1.052	1. STORAGE	5.00	
1.053	1. STORAGE	5.00	
1.054	1. STORAGE	5.00	
1.055	1. STORAGE	5.00	
1.056	1. STORAGE	5.00	
1.057	1. STORAGE	5.00	
1.058	1. STORAGE	5.00	
1.059	1. STORAGE	5.00	
1.060	1. STORAGE	5.00	
1.061	1. STORAGE	5.00	
1.062	1. STORAGE	5.00	
1.063	1. STORAGE	5.00	
1.064	1. STORAGE	5.00	
1.065	1. STORAGE	5.00	
1.066	1. STORAGE	5.00	
1.067	1. STORAGE	5.00	
1.068	1. STORAGE	5.00	
1.069	1. STORAGE	5.00	
1.070	1. STORAGE	5.00	
1.071	1. STORAGE	5.00	
1.072	1. STORAGE	5.00	
1.073	1. STORAGE	5.00	
1.074	1. STORAGE	5.00	
1.075	1. STORAGE	5.00	
1.076	1. STORAGE	5.00	
1.077	1. STORAGE	5.00	
1.078	1. STORAGE	5.00	
1.079	1. STORAGE	5.00	
1.080	1. STORAGE	5.00	
1.081	1. STORAGE	5.00	
1.082	1. STORAGE	5.00	
1.083	1. STORAGE	5.00	
1.084	1. STORAGE	5.00	
1.085	1. STORAGE	5.00	
1.086	1. STORAGE	5.00	
1.087	1. STORAGE	5.00	
1.088	1. STORAGE	5.00	
1.089	1. STORAGE	5.00	
1.090	1. STORAGE	5.00	
1.091	1. STORAGE	5.00	
1.092	1. STORAGE	5.00	
1.093	1. STORAGE	5.00	
1.094	1. STORAGE	5.00	
1.095	1. STORAGE	5.00	
1.096	1. STORAGE	5.00	
1.097	1. STORAGE	5.00	
1.098	1. STORAGE	5.00	
1.099	1. STORAGE	5.00	
1.100	1. STORAGE	5.00	

Vinjeta / Key Plan:

Revizija / Revision:

Br. / No.	Opis / Description	Datum / Date

Kola prizemlja +/- 0.00 = 76.70 m

Investitor / Client: **BW BELGRADE WATERFRONT** BEOGRAD NA VODI d.o.o. Karađorđeva 48, Beograd

Autor projekta / Author: **NRAarchitects doo.** NR Architect d.o.o. Nikodima Mlaša 15, Beograd

Nosilac projekta / projektant / Lead Consultant: **NRAarchitects doo.** NR Architect d.o.o. Nikodima Mlaša 15, Beograd

Projektant / Consultant: **ARHITEKTONSKO-INŽENJERSKI STUDIO ARIS d.o.o.** Arhitektonsko-inženjerski studio - Aris d.o.o. Šumadijske divizije 1a, Kragujevac

Naziv objekta / lokacija / Project Name and Location:
STAMBENO-POSLOVNI KOMPLEKS, BLOK 27A
 Bulevar Vudrova Vilsona - SAO 1
 P.p.br. 1508/278, 1508/279, 1508/280, 1508/281, 1508/282, 1508/288, 1508/373, 1508/374, 1508/375, 3292/1, 3292/2, 3292/3, 3292/11 K.O. Savski venac, Opština Savski venac, Beograd

RESIDENTIAL & COMMERCIAL COMPLEX, PLOT 27A
 Woodrow Wilson Boulevard-SAO 1
 P.p.br. 1508/278, 1508/279, 1508/280, 1508/281, 1508/282, 1508/288, 1508/373, 1508/374, 1508/375, 3292/1, 3292/2, 3292/3, 3292/11 Municipality of Savski venac, Belgrade

SFRA PROJEKTA
01/22

VRSTA TEHNIČKE DOKUMENTACIJE / DESIGN STAGE
IZMENA IDEJNOG REŠENJA
CD-CONCEPT DESIGN

Osnovni naziv dela projekta / Discipline: **Sveska 1 - Projekt arhitekture / Book 1 - Architecture**

Odgovorni projektant / Licensed Architect: **Miloš Radivojević, d.l.a. (MSci Arch)**

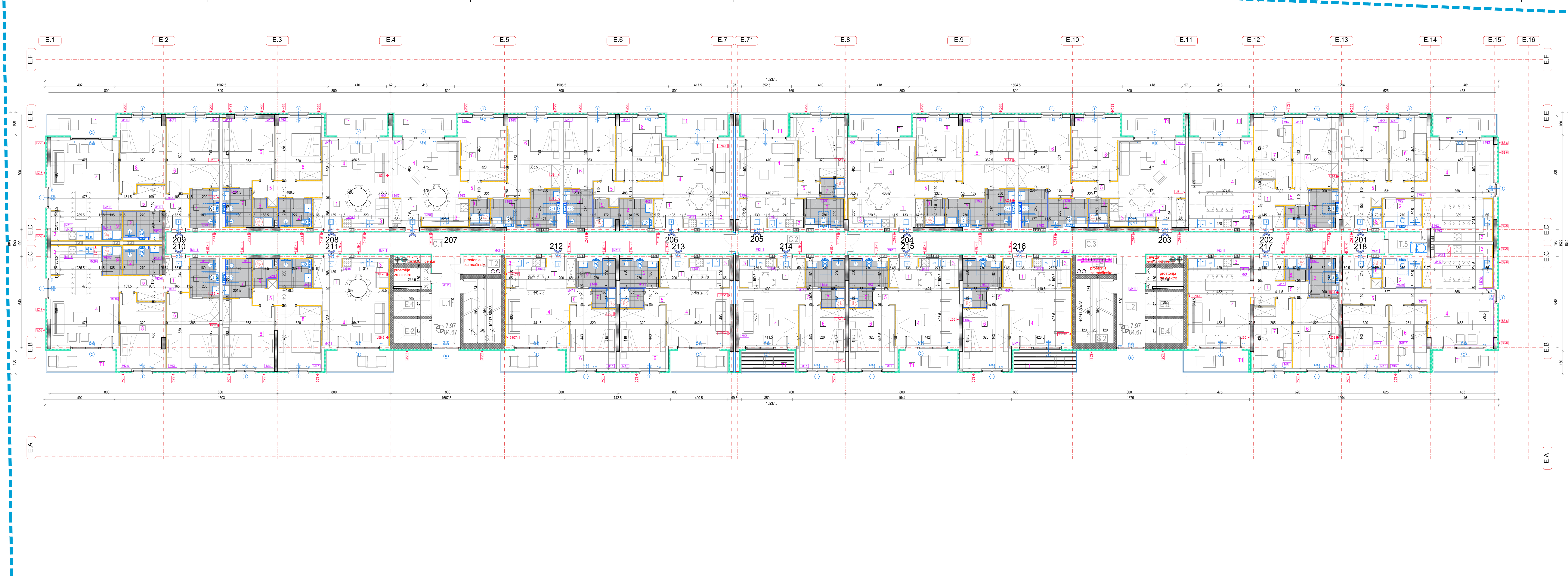
Br. licenca / License no.: **300 E162 06**

Projektantski tim / Design Team:
 Marko Šimović, m.l.a. Ana Petrović, m.l.a.
 Miro Petrović, m.l.a. Lazar Nikolić, m.l.a.
 Miro Petrović, m.l.a. Miro Petrović, m.l.a.
 Jovana Mladinović, m.l.a. Miro Milić, m.l.a.
 Bogdan Jovanović, m.l.a. Vladimir Milić
 Nikola Šimović, d.l.a. Sofija Spiglac

NAZIV CRTEŽA / DRAWING TITLE
OBJEKAT E / BUILDING E
OSNOVA PRIZEMLJA / GROUND FLOOR
OZNAKA CRTEŽA / DRAWING NUMBER

BW_P27A_NRA_CD_AR_E_PL_01_REV001

Radnja / Scale: 1:100 **Datum / Date:** 11.2023. **Rev / Br. lista / Sheet No.:** 001 E.01



BR. / No.	Opis / Description	Datum / Date
1	Revizija / Revision:	
2	Investitor / Client	BW BELFRONT
3	Autor projekta / Author	NRA architects doo.
4	Nosilac projekta / Projectant / Lead Consultant	NRA architects doo.
5	Projekat / Consultant	ARHITEKTONSKO INŽENJERSKI STUDIO ARIS d.o.o.
6	Ime objekta / Location / Project Name and Location:	STAMBENO-POSLOVNI KOMPLEKS, BLOK 27A
7	Adresa objekta / Address:	Bulevar Vudrova Vilsona - SAO 1
8	Opis objekta / Description:	Residential & Commercial Complex, Plot 27a
9	Ime projekta / Project Name:	SFRJA PROJEKTA 01/22
10	Vrsta tehničke dokumentacije / Design Stage:	IZMENA IDEJNOG REŠENJA CD-CONCEPT DESIGN
11	Ime arhitekta / Architect:	Miloš Radičević, d.i.a. (MScI Arch)
12	Ime inženjera / Engineer:	Božica Jovanović, d.i.a. (MScI Eng)
13	Ime arhitektonskog studija / Architectural Studio:	ARHITEKTONSKO INŽENJERSKI STUDIO ARIS d.o.o.
14	Ime inženjerskog studija / Engineering Studio:	INŽENJERSKI BUREAU ZA VEŠTAČENJE I PROJEKTOVANJE
15	Ime projekatne kancelarije / Project Office:	300 E162 06
16	Ime projekatne kancelarije / Project Office:	300 E162 06
17	Ime projekatne kancelarije / Project Office:	300 E162 06
18	Ime projekatne kancelarije / Project Office:	300 E162 06
19	Ime projekatne kancelarije / Project Office:	300 E162 06
20	Ime projekatne kancelarije / Project Office:	300 E162 06
21	Ime projekatne kancelarije / Project Office:	300 E162 06
22	Ime projekatne kancelarije / Project Office:	300 E162 06
23	Ime projekatne kancelarije / Project Office:	300 E162 06
24	Ime projekatne kancelarije / Project Office:	300 E162 06
25	Ime projekatne kancelarije / Project Office:	300 E162 06
26	Ime projekatne kancelarije / Project Office:	300 E162 06
27	Ime projekatne kancelarije / Project Office:	300 E162 06
28	Ime projekatne kancelarije / Project Office:	300 E162 06
29	Ime projekatne kancelarije / Project Office:	300 E162 06
30	Ime projekatne kancelarije / Project Office:	300 E162 06
31	Ime projekatne kancelarije / Project Office:	300 E162 06
32	Ime projekatne kancelarije / Project Office:	300 E162 06
33	Ime projekatne kancelarije / Project Office:	300 E162 06
34	Ime projekatne kancelarije / Project Office:	300 E162 06
35	Ime projekatne kancelarije / Project Office:	300 E162 06
36	Ime projekatne kancelarije / Project Office:	300 E162 06
37	Ime projekatne kancelarije / Project Office:	300 E162 06
38	Ime projekatne kancelarije / Project Office:	300 E162 06
39	Ime projekatne kancelarije / Project Office:	300 E162 06
40	Ime projekatne kancelarije / Project Office:	300 E162 06
41	Ime projekatne kancelarije / Project Office:	300 E162 06
42	Ime projekatne kancelarije / Project Office:	300 E162 06
43	Ime projekatne kancelarije / Project Office:	300 E162 06
44	Ime projekatne kancelarije / Project Office:	300 E162 06
45	Ime projekatne kancelarije / Project Office:	300 E162 06
46	Ime projekatne kancelarije / Project Office:	300 E162 06
47	Ime projekatne kancelarije / Project Office:	300 E162 06
48	Ime projekatne kancelarije / Project Office:	300 E162 06
49	Ime projekatne kancelarije / Project Office:	300 E162 06
50	Ime projekatne kancelarije / Project Office:	300 E162 06
51	Ime projekatne kancelarije / Project Office:	300 E162 06
52	Ime projekatne kancelarije / Project Office:	300 E162 06
53	Ime projekatne kancelarije / Project Office:	300 E162 06
54	Ime projekatne kancelarije / Project Office:	300 E162 06
55	Ime projekatne kancelarije / Project Office:	300 E162 06
56	Ime projekatne kancelarije / Project Office:	300 E162 06
57	Ime projekatne kancelarije / Project Office:	300 E162 06
58	Ime projekatne kancelarije / Project Office:	300 E162 06
59	Ime projekatne kancelarije / Project Office:	300 E162 06
60	Ime projekatne kancelarije / Project Office:	300 E162 06
61	Ime projekatne kancelarije / Project Office:	300 E162 06
62	Ime projekatne kancelarije / Project Office:	300 E162 06
63	Ime projekatne kancelarije / Project Office:	300 E162 06
64	Ime projekatne kancelarije / Project Office:	300 E162 06
65	Ime projekatne kancelarije / Project Office:	300 E162 06
66	Ime projekatne kancelarije / Project Office:	300 E162 06
67	Ime projekatne kancelarije / Project Office:	300 E162 06
68	Ime projekatne kancelarije / Project Office:	300 E162 06
69	Ime projekatne kancelarije / Project Office:	300 E162 06
70	Ime projekatne kancelarije / Project Office:	300 E162 06
71	Ime projekatne kancelarije / Project Office:	300 E162 06
72	Ime projekatne kancelarije / Project Office:	300 E162 06
73	Ime projekatne kancelarije / Project Office:	300 E162 06
74	Ime projekatne kancelarije / Project Office:	300 E162 06
75	Ime projekatne kancelarije / Project Office:	300 E162 06
76	Ime projekatne kancelarije / Project Office:	300 E162 06
77	Ime projekatne kancelarije / Project Office:	300 E162 06
78	Ime projekatne kancelarije / Project Office:	300 E162 06
79	Ime projekatne kancelarije / Project Office:	300 E162 06
80	Ime projekatne kancelarije / Project Office:	300 E162 06
81	Ime projekatne kancelarije / Project Office:	300 E162 06
82	Ime projekatne kancelarije / Project Office:	300 E162 06
83	Ime projekatne kancelarije / Project Office:	300 E162 06
84	Ime projekatne kancelarije / Project Office:	300 E162 06
85	Ime projekatne kancelarije / Project Office:	300 E162 06
86	Ime projekatne kancelarije / Project Office:	300 E162 06
87	Ime projekatne kancelarije / Project Office:	300 E162 06
88	Ime projekatne kancelarije / Project Office:	300 E162 06
89	Ime projekatne kancelarije / Project Office:	300 E162 06
90	Ime projekatne kancelarije / Project Office:	300 E162 06
91	Ime projekatne kancelarije / Project Office:	300 E162 06
92	Ime projekatne kancelarije / Project Office:	300 E162 06
93	Ime projekatne kancelarije / Project Office:	300 E162 06
94	Ime projekatne kancelarije / Project Office:	300 E162 06
95	Ime projekatne kancelarije / Project Office:	300 E162 06
96	Ime projekatne kancelarije / Project Office:	300 E162 06
97	Ime projekatne kancelarije / Project Office:	300 E162 06
98	Ime projekatne kancelarije / Project Office:	300 E162 06
99	Ime projekatne kancelarije / Project Office:	300 E162 06
100	Ime projekatne kancelarije / Project Office:	300 E162 06

Vinjeta / Key Plan:

Revizija / Revision:

Br. / No.	Opis / Description	Datum / Date
1		
2		
3		
4		
5		
6		
7		
8		
9		
10		
11		
12		
13		
14		
15		
16		
17		
18		
19		
20		
21		
22		
23		
24		
25		
26		
27		
28		
29		
30		
31		
32		
33		
34		
35		
36		
37		
38		
39		
40		
41		
42		
43		
44		
45		
46		
47		
48		
49		
50		
51		
52		
53		
54		
55		
56		
57		
58		
59		
60		
61		
62		
63		
64		
65		
66		
67		
68		
69		
70		
71		
72		
73		
74		
75		
76		
77		
78		
79		
80		
81		
82		
83		
84		
85		
86		
87		
88		
89		
90		
91		
92		
93		
94		
95		
96		
97		
98		
99		
100		

Objekat E / BUILDING E
OSNOVA 2. SPRATA / 2nd FLOOR PLAN
OSNAKA CRTEŽA / DRAWING NUMBER
BW_P27A_NRA_CD_AR_E_PL_03_REV001

Razmera / Scale: 1:100
Datum / Date: 11.2023.
Rev / Br. lista / Sheet No.: 001
E.03



Br. / No.	Opis / Description	Datum / Date
1	Revizija / Revision:	
2	Investitor / Client:	
3	Projekat / Projectant:	
4	Projekat / Consultant:	
5	Projekat / Consultant:	
6	Projekat / Consultant:	
7	Projekat / Consultant:	
8	Projekat / Consultant:	
9	Projekat / Consultant:	
10	Projekat / Consultant:	
11	Projekat / Consultant:	
12	Projekat / Consultant:	
13	Projekat / Consultant:	
14	Projekat / Consultant:	
15	Projekat / Consultant:	
16	Projekat / Consultant:	
17	Projekat / Consultant:	
18	Projekat / Consultant:	
19	Projekat / Consultant:	
20	Projekat / Consultant:	
21	Projekat / Consultant:	
22	Projekat / Consultant:	
23	Projekat / Consultant:	
24	Projekat / Consultant:	
25	Projekat / Consultant:	
26	Projekat / Consultant:	
27	Projekat / Consultant:	
28	Projekat / Consultant:	
29	Projekat / Consultant:	
30	Projekat / Consultant:	
31	Projekat / Consultant:	
32	Projekat / Consultant:	
33	Projekat / Consultant:	
34	Projekat / Consultant:	
35	Projekat / Consultant:	
36	Projekat / Consultant:	
37	Projekat / Consultant:	
38	Projekat / Consultant:	
39	Projekat / Consultant:	
40	Projekat / Consultant:	
41	Projekat / Consultant:	
42	Projekat / Consultant:	
43	Projekat / Consultant:	
44	Projekat / Consultant:	
45	Projekat / Consultant:	
46	Projekat / Consultant:	
47	Projekat / Consultant:	
48	Projekat / Consultant:	
49	Projekat / Consultant:	
50	Projekat / Consultant:	
51	Projekat / Consultant:	
52	Projekat / Consultant:	
53	Projekat / Consultant:	
54	Projekat / Consultant:	
55	Projekat / Consultant:	
56	Projekat / Consultant:	
57	Projekat / Consultant:	
58	Projekat / Consultant:	
59	Projekat / Consultant:	
60	Projekat / Consultant:	
61	Projekat / Consultant:	
62	Projekat / Consultant:	
63	Projekat / Consultant:	
64	Projekat / Consultant:	
65	Projekat / Consultant:	
66	Projekat / Consultant:	
67	Projekat / Consultant:	
68	Projekat / Consultant:	
69	Projekat / Consultant:	
70	Projekat / Consultant:	
71	Projekat / Consultant:	
72	Projekat / Consultant:	
73	Projekat / Consultant:	
74	Projekat / Consultant:	
75	Projekat / Consultant:	
76	Projekat / Consultant:	
77	Projekat / Consultant:	
78	Projekat / Consultant:	
79	Projekat / Consultant:	
80	Projekat / Consultant:	
81	Projekat / Consultant:	
82	Projekat / Consultant:	
83	Projekat / Consultant:	
84	Projekat / Consultant:	
85	Projekat / Consultant:	
86	Projekat / Consultant:	
87	Projekat / Consultant:	
88	Projekat / Consultant:	
89	Projekat / Consultant:	
90	Projekat / Consultant:	
91	Projekat / Consultant:	
92	Projekat / Consultant:	
93	Projekat / Consultant:	
94	Projekat / Consultant:	
95	Projekat / Consultant:	
96	Projekat / Consultant:	
97	Projekat / Consultant:	
98	Projekat / Consultant:	
99	Projekat / Consultant:	
100	Projekat / Consultant:	

Vinjeta / Key Plan:

Revizija / Revision:

Br. / No.	Opis / Description	Datum / Date
1	Revizija / Revision:	

Kola prizemlja +/- 0.00 = 76.70 m

Investitor / Client: **BW BELGRADE WATERFRONT**

Projekat / Projectant: **NRA architects doo.**

Projekat / Consultant: **ARHITEKTONSKO INŽENJERSKI STUDIO ARIS d.o.o.**

Naziv objekta i lokacija / Project Name and Location: **STAMBENO-POSLOVNI KOMPLEKS, PLOT 27A**

Adresa / Address: **Woodrow Wilson Boulevard - SAO 1**

RESIDENTIAL & COMMERCIAL COMPLEX, PLOT 27A

VRSTA TEHNIČKE DOKUMENTACIJE / DESIGN STAGE: **IZMENA IDEJNOG REŠENJA CD-CONCEPT DESIGN**

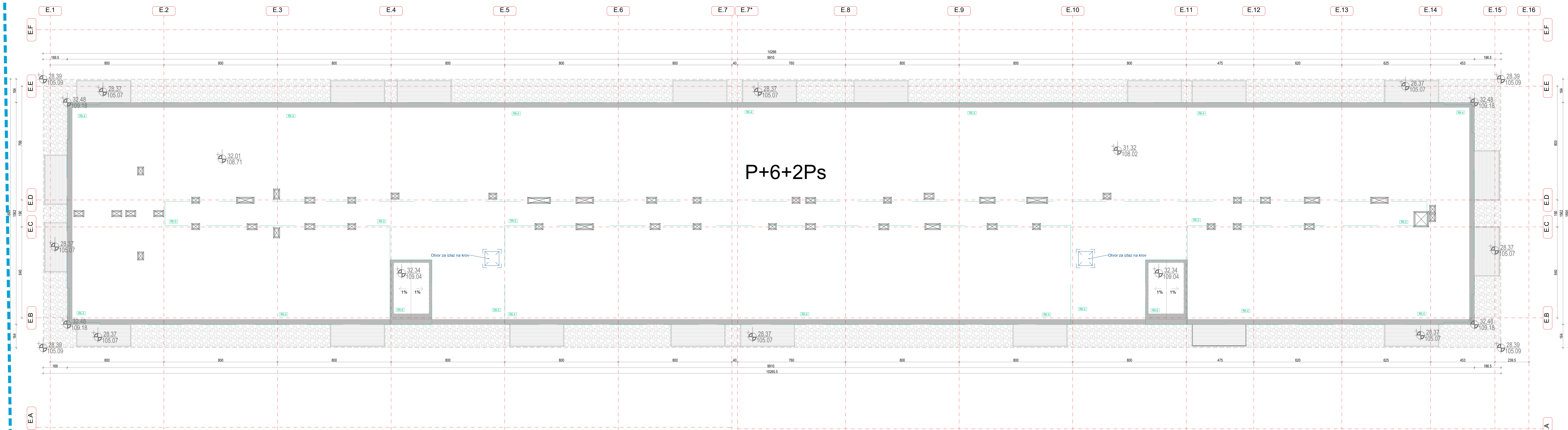
OSNOVA I PUVUČENOS SPRATA / 8th: RESET FLOOR PLAN

OSNAKA CRTEŽA / DRAWING NUMBER: **BW_P27A_NRA_CD_AR_E_PL_09_REV01**

Dimenzija / Scale: 1:100

Datum / Date: 11.2023.

Rev / Br. lista / Sheet No.: 001 / E.09



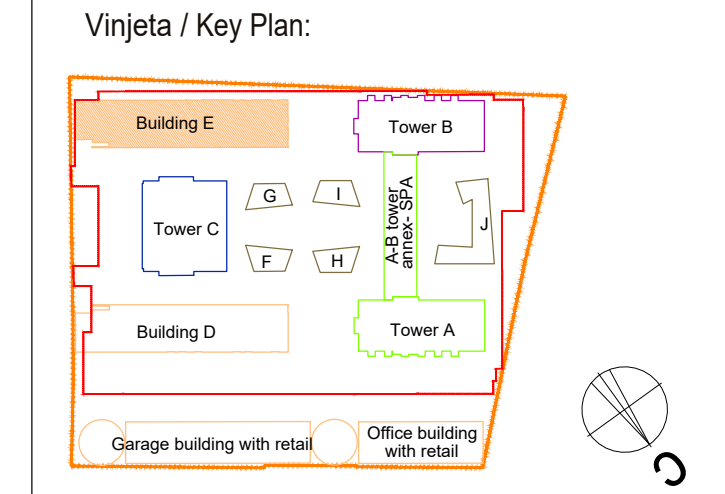
1.01	1.02	1.03	1.04	1.05	1.06	1.07	1.08	1.09	1.10	1.11	1.12	1.13	1.14	1.15	1.16	1.17	1.18	1.19	1.20
1.21	1.22	1.23	1.24	1.25	1.26	1.27	1.28	1.29	1.30	1.31	1.32	1.33	1.34	1.35	1.36	1.37	1.38	1.39	1.40

1.41	1.42	1.43	1.44	1.45	1.46	1.47	1.48	1.49	1.50	1.51	1.52	1.53	1.54	1.55	1.56	1.57	1.58	1.59	1.60
1.61	1.62	1.63	1.64	1.65	1.66	1.67	1.68	1.69	1.70	1.71	1.72	1.73	1.74	1.75	1.76	1.77	1.78	1.79	1.80

1.81	1.82	1.83	1.84	1.85	1.86	1.87	1.88	1.89	1.90	1.91	1.92	1.93	1.94	1.95	1.96	1.97	1.98	1.99	2.00
2.01	2.02	2.03	2.04	2.05	2.06	2.07	2.08	2.09	2.10	2.11	2.12	2.13	2.14	2.15	2.16	2.17	2.18	2.19	2.20

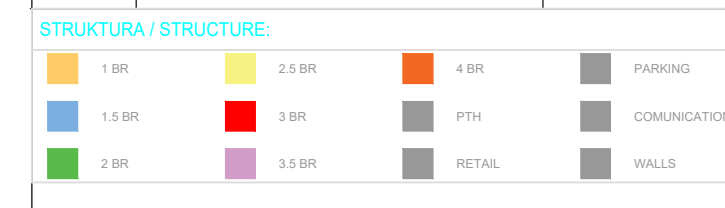
2.21	2.22	2.23	2.24	2.25	2.26	2.27	2.28	2.29	2.30	2.31	2.32	2.33	2.34	2.35	2.36	2.37	2.38	2.39	2.40
2.41	2.42	2.43	2.44	2.45	2.46	2.47	2.48	2.49	2.50	2.51	2.52	2.53	2.54	2.55	2.56	2.57	2.58	2.59	2.60

Projekantski tim / Design Team
 Marija Simović, m.i.a. Ana Petrović, m.i.a.
 Mica Pasić, d.i.a. Luka Nikolić, m.i.a.
 Jovana Mladinović, m.i.a. Miloš Milić, m.i.a.
 Nikola Simović, d.i.a. Sofija Igratović



Revizija / Revision:

Br. / No.	Opis / Description	Datum / Date



Kola prizemlja +/- 0.00 = 76.70 m
 Investitor / Client: **BW BELGRADE WATERFRONT** BEOGRAD NA VODI d.o.o. Karađorđeva 48, Beograd
 Autor projekta / Author: **NRAarchitects doo.** NR Architect d.o.o. Nikodima Mlaša 15, Beograd

Projekat / Consultant: **ARHITEKTONSKO INŽENJERSKI STUDIO ARIS d.o.o.** Arhitektonsko-inženjerski studio - ARIS d.o.o. Šumadijske divizije 1a, Kragujevac

Projekat / Consultant: **ARHITEKTONSKO INŽENJERSKI STUDIO ARIS d.o.o.** Arhitektonsko-inženjerski studio - ARIS d.o.o. Šumadijske divizije 1a, Kragujevac

Naziv objekta i lokacija / Project Name and Location:
STAMBENO-POSLOVNI KOMPLEKS, BLOK 27A
 Bulevar Vudrova Vilsona - SAO 1
 K.p.br. 1508/278, 1508/279, 1508/280, 1508/281, 1508/282, 1508/288, 1508/373, 1508/374, 1508/375, 3292/4, 3292/5, 3292/11 K.O. Savski venac, Opština Savski venac, Beograd

RESIDENTIAL & COMMERCIAL COMPLEX, PLOT 27a
 Woodrow Wilson Boulevard-SAO 1
 Plot: 1508/278, 1508/279, 1508/280, 1508/281, 1508/282, 1508/288, 1508/373, 1508/374, 1508/375, 3292/4, 3292/5, 3292/11 Municipality of Savski venac, Belgrade

VRSTA TEHNIČKE DOKUMENTACIJE / DESIGN STAGE
IZMENA IDEJNOG REŠENJA
 CD-CONCEPT DESIGN
 Oznaka i naziv dela projekta / Discipline
Sveska 1 - Projekat arhitekture / Book 1 - Architecture

Odgovorni projektant / Licensed Engineer
Miloš Radičević, d.i.a. (MSci Arch)
 Br. licence / License no.
300 E162 06

Projektantski tim / Design Team
 Marija Simović, m.i.a. Ana Petrović, m.i.a.
 Mica Pasić, d.i.a. Luka Nikolić, m.i.a.
 Jovana Mladinović, m.i.a. Miloš Milić, m.i.a.
 Nikola Simović, d.i.a. Sofija Igratović

OBJEKAT E / BUILDING E
 OSNOVA KROVA / ROOF PLAN
 OZNAKA CRTEŽA / DRAWING NUMBER
BW_P27A_NRA_CD_AR_E_PL_10_REV001

Dimenzija / Scale	Datum / Date	Rev	Br. lista / Sheet No.
1:100	11.2023.	001	E.10